

# PRODUCT DATASHEET

## CC300 Slim Concealed Chain Actuator

Suitable for use in smoke and natural ventilators

### Technical

Voltage:

DC version :24 Vdc +/- 15%

Rated current : 1.2 A @ 24Vdc

Push/Pull forces: 300N

Stroke: 300mm

(>300mm retraction only)

Clamping forces: >3000N

Speed: 9.5mm/s

Housing: Aluminum alloy

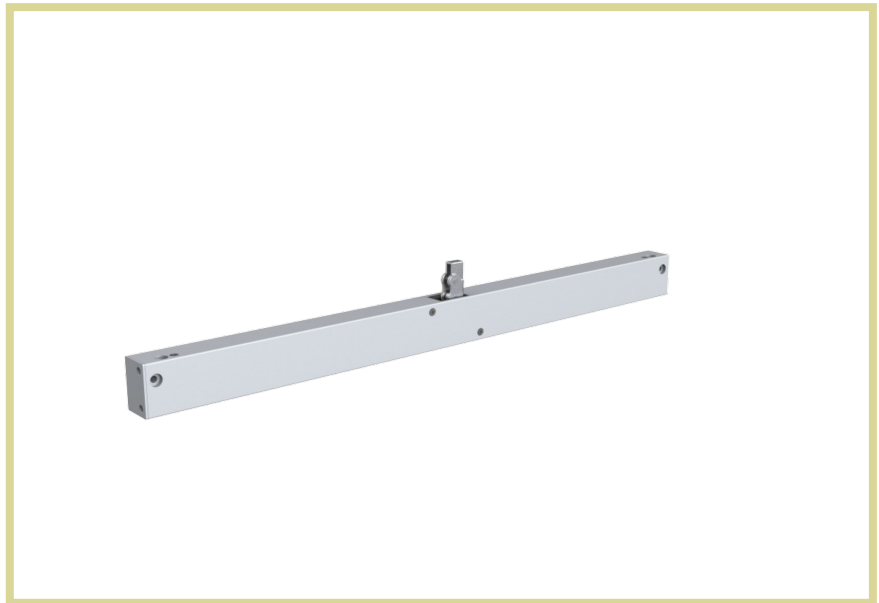
Finishes: Anodized RAL 9006

Cable: 2 meter PVC cable

Ingress Protection: IP 32

Endurance: > 10,000 cycles  
(30% duty cycle)

Weight : 1.0 kg



### Description

The slim design allows it to be installed inside the window profile to achieve the superior aesthetic requirement while it can be used for general purpose smoke and natural ventilation. This is an upgrade version of CC250 model to reach even higher performance.

### Features

- Concealed installation inside the profile.
- Stylish design.
- Quiet and stable. Suitable for home applications.
- Easy to install.

