

PRODUCT DATASHEET

MPL 600 Multiple Lock/Louver Actuator

Suitable for use in smoke and natural ventilators

Technical

Voltage: 24 Vdc +/- 15%

Stroke: 22/55mm

Push/Pull forces : 600N

Ampere: 0.8A @ 24Vdc

Speed: 3.2 mm/s

Housing: Extruded Aluminum

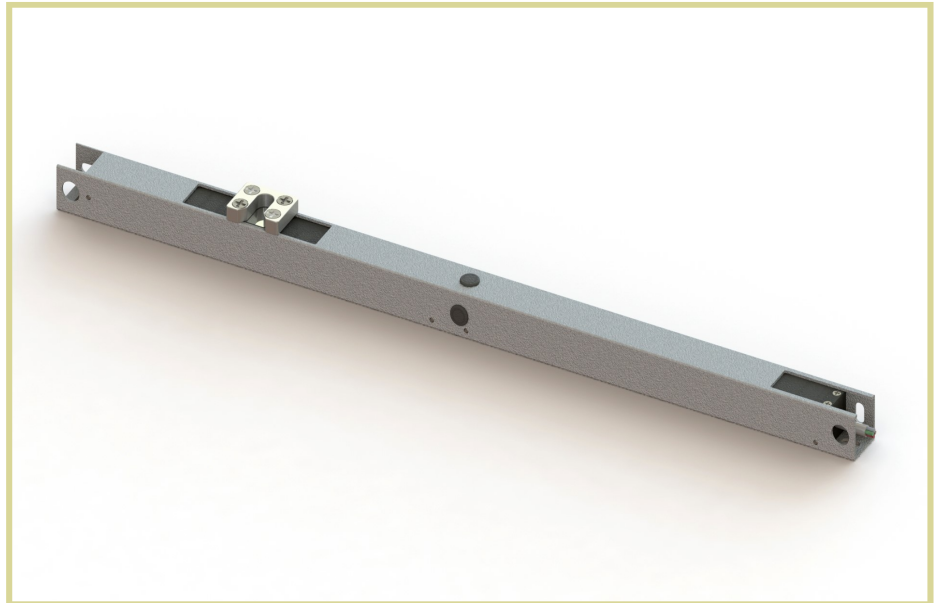
Finishes: Powder coated RAL 9006

Cable: 1 meter silicon cable

Ingress Protection: IP 32

Endurance: 10,000 cycles
30% duty cycle

Weight : 1.2 kg (22mm)



Description

Compact design, and equipped with manual unlocking mechanism, ideal for in-profile installation for good aesthetic appearance.

Control sequence:

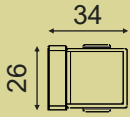
Open MPL > Open Vent > Close Vent > lock MPL

Features

- Compact design easy for conceal installation.
- 20mm and 55mm stroke selection for driving MPL or louver.
- Built in micro processor control and compatible with intelligent actuator for control sequence. No external board required.
- Equipped with manual override for quick release during power outage, and malfunction to facilitate maintenance work.

PRODUCT DATASHEET

Dimension



Order code	Description
M06.C.D.055.S	600N louver actuator, 55mm stroke
M06.C.D.022.S	600N MPL actuator, 22mm stroke