

PRODUCT DATASHEET

RM600/RM800 Rack and Pinion Actuator

Suitable for use in smoke and natural ventilators

Technical

Voltage: 24 Vdc +/- 15%

Ampere :

Single/Master slave 0.8-1A

Master/Master 1.6-2A

Stroke: 100-1,000mm

Push/Pull forces :

RM 600 = 600N (single/master-slave)

RM 800 = 800N (single/master-slave)

RM 1200 = 1200N (master/master)

RM 1600 = 1600N (master/master)

Clamping forces: 1500N

(based on manufacturers bracket)

Speed: 8mm/s

Housing: Plastic/Aluminum

Finishes: Powder coated RAL9006

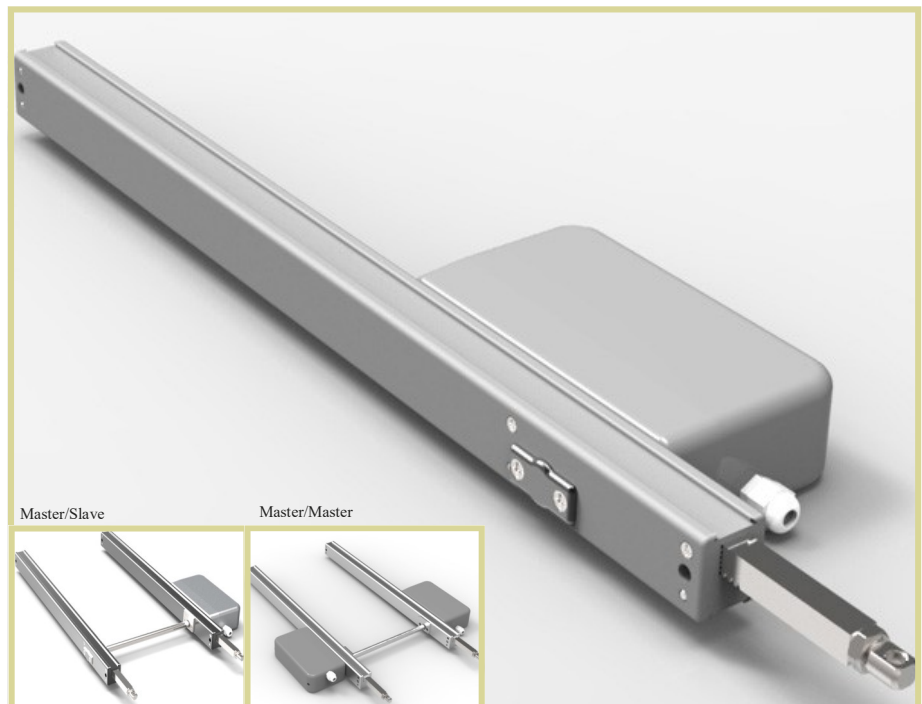
Cable: 1 meter silicon cable

Ingress Protection: IP 55

Endurance: 10,000 cycles test
30% duty cycle

Weight : 2 kg (1000mm)

Synchronization: mechanically
by connecting rod



Description

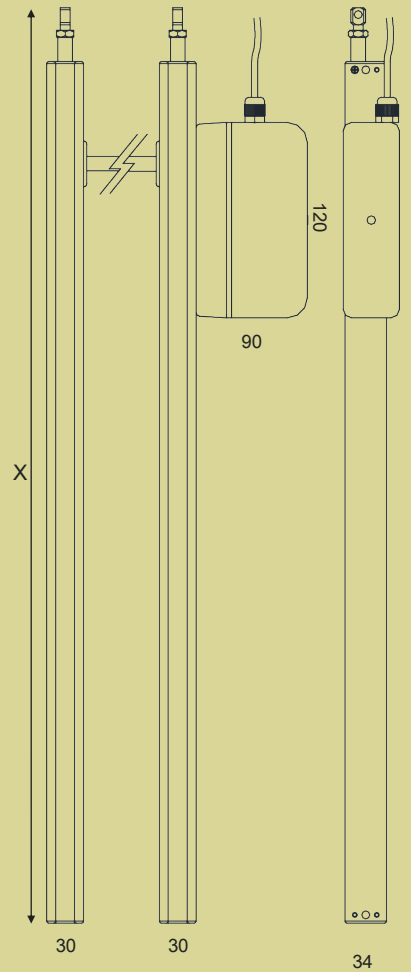
Low cost solution for roof lights, louver, and heavy window application. There are master/slave and master/master configuration using Rack and Pinion motor to provide 2 catches on one ventilator economically, as the synchronization is done by mechanically linked rod to bring 2 motors the same speed.

Features

- Affordable window automation solution for roof light and slope vents.
- Wide range of force available for different application.
- Corrosion resistance.
- Design to meet EN 12101-2 annex G.
- Choice of master/master and master/slave configuration for 2 catches application.
- Mechanically connected for simple, low cost tandem protection.
- Choice of plastic and metal housing.

PRODUCT DATASHEET

Dimension



Stroke mm	Eyebolt to Eyebolt X (mm)
200	392
350	542
450	642
550	742
700	892
800	992
1000	1192

Order code	Description
R06.N.D.200.A	Rack and Pinion actuator,600N, Stroke 200mm, (bracket not included)
R06.N.D.250.A	Rack and Pinion actuator,600N, Stroke 250mm, (bracket not included)
R06.N.D.350.A	Rack and Pinion actuator,600N, Stroke 350mm, (bracket not included)
R06.N.D.550.A	Rack and Pinion actuator,600N, Stroke 550mm, (bracket not included)
R06.N.D.700.A	Rack and Pinion actuator,600N, Stroke 700mm, (bracket not included)
R06.N.D.800.A	Rack and Pinion actuator,600N, Stroke 800mm, (bracket not included)
R06.N.D.1K0.A	Rack and Pinion actuator,600N, Stroke 1000mm, (bracket not included)
R08.B.S.046.S	Sliding bracket set for Rack and Pinion Actuator
R08.B.G.0.38.U	U bracket set for Rack and Pinion Actuator, 38mm high

How to order VARIANCES

R08

N

D

XXX

A

single/master slave

R06 = 600N
R08=800N

Master/Master

R12= 2 x 600N
R16= 2 x 800N

N = Normal w/
plastic housing
M = Normal w/
metal housing
E = Intelligent w/
metal housing

D = 24Vdc
A= 230Vac

Stroke
1000mm = 1K0
500mm = 500
250mm = 250

S = Silver
(RAL 9006)
B = Black
A = Anodized



Use of improper brackets will damage windows and actuators or reduce their useful life, please contact our sales for special brackets supply.

