

PRODUCT DATASHEET

CONTROL PANELS

PRODUCT DATASHEET

SHEV Compact Control Panel 5A

For controlling and powering of smoke ventilator

Technical

Input: 220Vac

Output : 24Vdc @5A

Consumption: 120W Max.

Working Temp: -10 ~ +50 °C

RH: 10-90%, Non-condensing

Ingress Protection: IP 20

Dimension:

400 * 300 *160 mm (W*D*H)

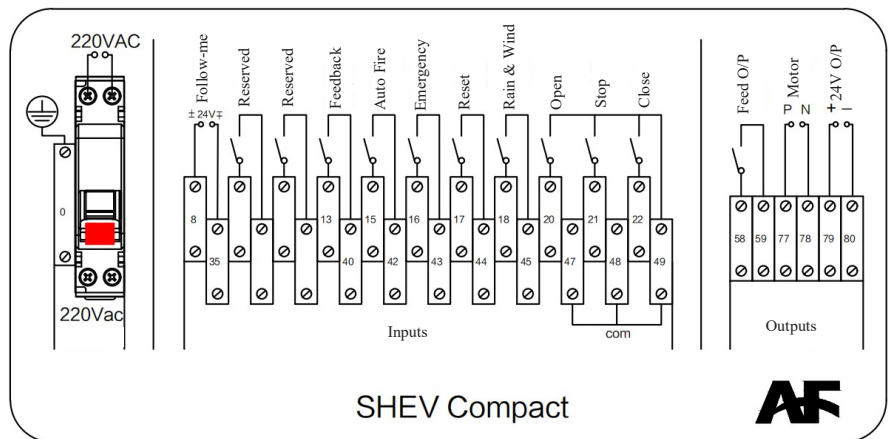
Conform To: GB16808-2006

Part Number: SV.C.05.01.00



Description

SHEV controller receives input from the fire alarm system as well as the manual control buttons to enable emergency opening of a single smoke zone. It also provides day-to-day inputs for natural ventilation.



Use Instructions

Automatic Mode

1, Switch the Manual/Auto key to Auto to enter the Standby mode. The Auto Mode indicator will turn on.
 2, When a closed dry contact signal is applied to terminals 15 & 42 (fire alarm active), the controller outputs +24V on terminals 77 & 78, triggering window opening. The output voltage will be continuously maintained. At the same time, the Fire Signal indicator lights up and the buzzer sounds.

Note: If the Manual/Auto key is switched to Manual Mode when a fire alarm signal is received on terminals 15 & 42, there will be no output from terminals 77 & 78, but the Fire Signal Indicator and buzzer will still activate.

Manual Opening

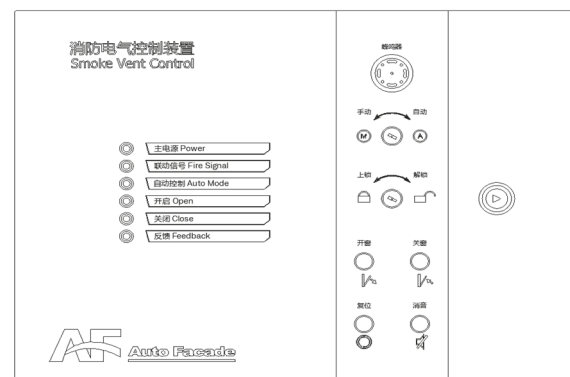
1, Switch the Lock/Unlock key to Unlock and press the Open button. The controller outputs +24V on terminals 77 & 78 to open the windows, and the Open Indicator light turns on.

Manual Closing

1, Switch the Lock/Unlock key to Unlock and press the Close button. The controller outputs -24V on terminals 77 & 78 to drive the actuators to close the windows. At the same time, the Close Indicator light turns on.

Fire Feedback Output

The control panel can receive feedback signals from external controlled devices via terminals 13 and 40 (active on normally closed state). When a feedback signal is detected, the Feedback indicator lights up. The controller then sends a 24V active signal through terminals 58 & 59.



PRODUCT DATASHEET

SHEV Control Panel 20A

For controlling and

powering of smoke ventilator

Technical

Input: 220Vac, 8A

Output : 24Vdc @Max 25A (for two P/N outputs combined)

Consumption: 600W Max.

Working Temp: -10 ~ +50 °C

RH: 10-90%, Non-condensing

Ingress Protection: IP 20

Dimension:

500 * 400 *200 mm (W*D*H)

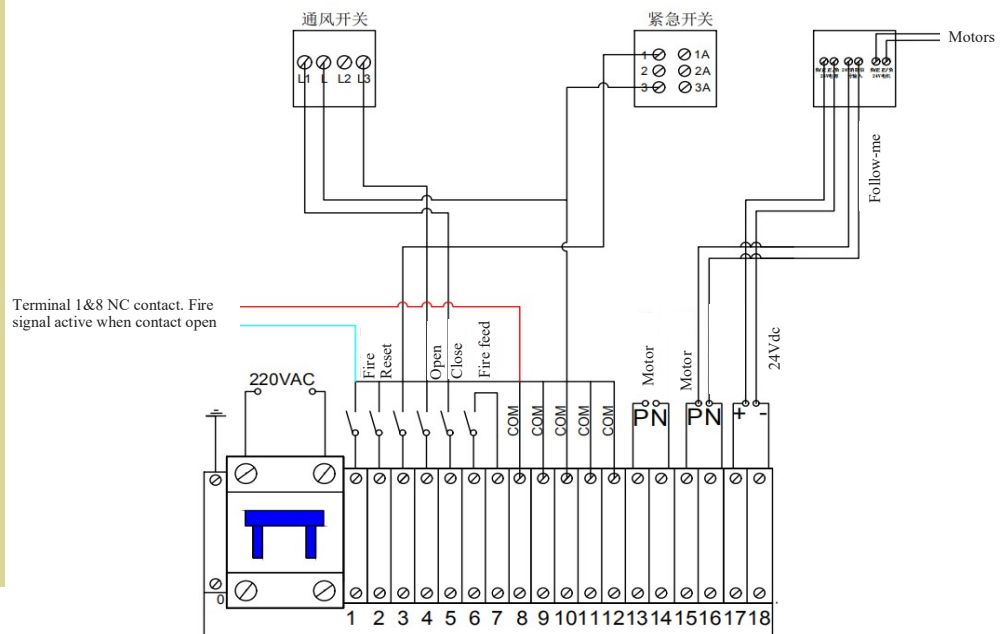
Conform To: GB16808-2006

Part Number: SV.C.20.01.01.CCC



Description

SHEV controller receives input from the fire alarm system as well as the manual control buttons to enable emergency opening of a single smoke zone. It also provides day-to-day inputs for natural ventilation.



Use Instructions

Automatic Mode

1, Set the controller to Auto Standby mode: Switch the 3-position key to Stop and 2-position key to Auto; then connect terminals 1 & 8 with a normally closed contacts (fire signal active on open contact). The Auto, Main Supply and 24Vdc Supply will be illuminated.

2, In standby mode, when an open dry contact signal is applied to terminals 1 & 8 (fire alarm active), the controller outputs +24V on terminals 13 & 14 and 15 & 16, triggering window opening. At the same time, the Fire alarm indicator and buzzer will activate. The 24V output will stop after 180 seconds.

Note: If the Manual/Auto key is switched to Manual Mode when a fire alarm signal is received on terminals 1 & 8, there will be no output from terminals 13 & 14 and 15 & 16, but the Fire Alarm Indicator and buzzer will still activate.

Manual Opening

1, Switch the 3-position key to Open, the controller outputs +24V on terminals 13 & 14 and 15 & 16, opening the windows, and the Run Indicator light turns on.

Manual Closing

1, Switch the 3-position key to Close. If the input signal is maintained for 2 seconds, a close command is triggered, the controller outputs -24V on terminals 13 & 14 and 15 & 16, which drives the actuators to close the windows. At the same time, the Close Indicator light turns on.

Fire Feedback Output

Upon fire alarm, the feedback signal is activated, switching terminals 6 & 7 from NO to NC. The Controller Device indicator turns on.

Auxiliary Control

A 24Vdc output (terminal 17 & 18) is available to supply power to the auxiliary control panel, which has a Follow-me input to receive the switching voltage from terminals 13 & 14 or 15 & 16. When a fire signal is present, the actuators connected to the auxiliary control panel will operate following exactly with the voltage polarity at these terminals in the controller.

PRODUCT DATASHEET

NV Auxiliary Control Panel 20A/30A

For controlling and powering of day-to-day ventilator

Technical

Input: 230Vac

Output Voltage: 24 Vdc

Output Current: 20A /32A

Working Temp: -10 ~ +50 °C

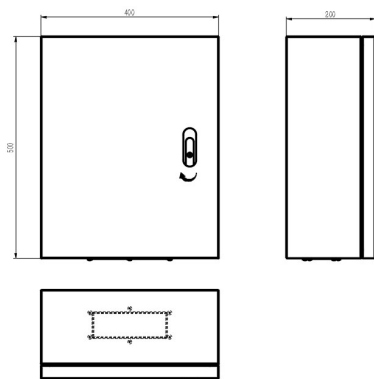
Humidity:

10-90%, Non-condensing

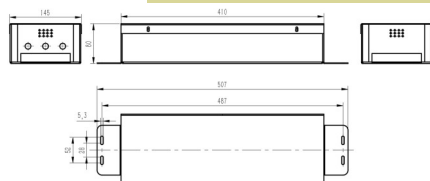
Ingress Protection: IP20

Dimensions:

Panel Type



Compact Type

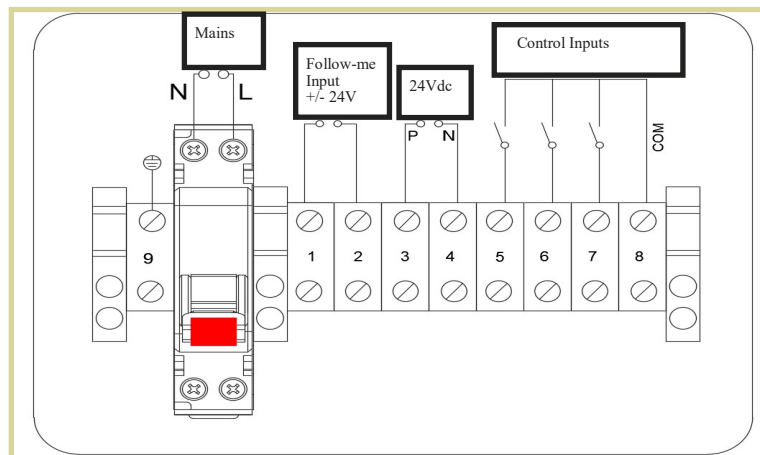


Description

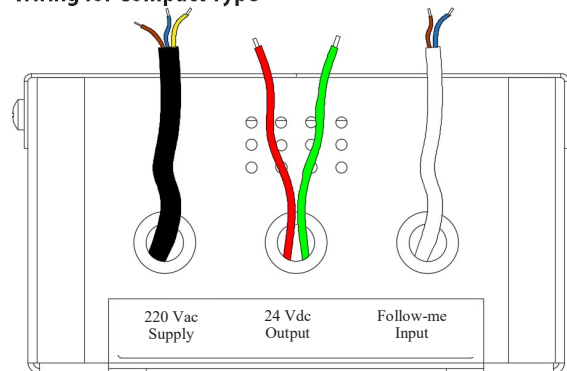
This control panel/box acts as an additional power supply and follows the control signal from a compatible AF main controller to drive the actuators. The panel also possess inputs for manual operations.

Order Code	Description
NV.S.20.00.01.V1	20A Auxilliary Ventilation Control Box (Compact Type), Single Zone
NV.S.30.00.01.V1	32A Auxilliary Ventilation Control Box (Compact Type), Single Zone
NV.S.20.00.01.V3	20A Auxilliary Ventilation Control Panel, Single Zone
NV.S.30.00.01.V3	32A Auxilliary Ventilation Control Panel, Single Zone

Wiring for Panel Type



Wiring for Compact Type



220 Vac Power Supply:
Brown = L, Blue = N,
Yellow = Ground

24 Vdc Output:
Red = 24V+, Green = 24V+

Follow-me Signal Input:
+/- 24V signal from controller
P/N output