

PRODUCT DATASHEET

RADIO CONTROLS

PRODUCT DATASHEET

Remote Control Transmitter and Receiver

Suitable for 230Vac and 24Vdc

Family of RF controls units

24Vdc-24Vdc RF receiver

6A controller

Input/Output: 24Vdc +/- 6%
 Rating (resistive load): 144W
 3-position button in BS Front Plate
 RF 868MHz

20A Control Module (opt. with PS)

Input/Output: 24Vdc +/- 6%
 Rating (resistive load): 480W
 RF 433MHz

230Vac-24Vdc RF receiver

External RF Controller

Input: 230Vac
 Output: 24Vdc
 Rating: 3A (resistive load)
 On board 3-position button
 Size: 86 x 86 mm, BS front plate
 Surface Mount
 RF 433MHz

"Built-in" Type RF Control Module

Input: 230Vac
 Output: 24Vdc
 Rating: 1.5A (resistive load)
 "Built in" module for CM02/CM04
 chain actuator.

RF 868MHz

RF Transmitter

RF433 RF868

Handheld, 1 channel	✓	✓
Handheld, 5 channels	✓	
BS front plate 86x86mm		✓



Description

Versatile control for window automation project where remote control is required. Additional input is provided in all external remote controls units for smoke ventilation or natural ventilation system for use as a priority control over day to day/RF controls. The "built-in" 230Vac version is ideal for domestic window automation project, just plug into any wall power outlet and you can swiftly control the opening and closing of window remotely.

Features

- Simple wiring and flexible to use.
- Secure rolling code with million coding combination with no interference.
- Flexible Switch look alike hand held controller replace normal day to day switch.
- Low cost and easy to use.
- Additional input available for automatic inputs such fire signal or weather sensor.
- Available for both 24Vdc/230Vac

PRODUCT DATASHEET

External Mounted Power Remote Control Unit EXT



Order Code: NV.B.05.01.08
24Vdc 6A RF Control Unit

Power Input/Output: 24Vdc +/- 6%
"Follow me"* input available
Rating: 144W (resistive load)
On board 3-position button
Size: 86 x 86mm BS front plate
Compatible RF 868mHz RF Transmitter
(NV.B.21.01.01, NV.B.22.01.01)

Order Code: NV.B.05.02.03
230Vac 3A RF Control Unit

Power Input: 230Vac +/-15%, Output: 24Vdc
"Follow me"* input available
Rating: 36W (resistive load)
On board 3-position button
Size: 86 x 86 mm, BS front plate
Compatible RF 868mHz RF Transmitter
(NV.B.21.01.01, NV.B.22.01.01)

20A Single Zone RF Slave Power Unit

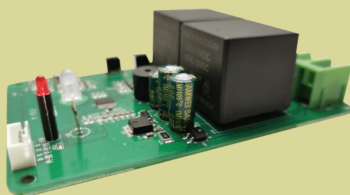
Voltage Input: 230Vac +/- 10%
Voltage Output: 24Vdc
Rating: 480W (resistive load)
"Follow me*" input from master controller
Additional day to day remote switch inputs
Plastic Enclosure: IP 55 .
Operating Temperature: -5°C— +55°C
Dimension: 245*145*105 mm
compatible RF 433 transmitter.
(NV.B.21.00.01.S1, NV.B.21.00.05)

Order Code: NV.S.20.00.01.S2



20A RF Control Module

Voltage Input: 24Vdc +/- 6%
Voltage Output: 24Vdc
Rating: 480W (resistive load)
Other Inputs
- "follow me" inputs from master controller
- Remote Day to day switch connection (require external 3 positions switch, preferably spring return)
compatible RF 433 transmitter.
(NV.B.21.00.01.S1, NV.B.21.00.05)



Order Code: NV.R.DB.15.09

* "Follow Me" inputs refer to the connection to compatible output from master controller. The slave unit will synchronize open/close operation of that in the master panel which could be triggered by presence of smoke, or other automatic inputs. The "follow me" input will have a priority over RF and Day to Day input in local slave controller.

PRODUCT DATASHEET

Window Actuator with Embedded Remote Control

Order Code: CA4.R.A.300.S/CA4.R.A.400.S
300mm/400mm Stroke, Force: 350N



350N RF Control 230Vac Chain Actuator

Power Input: 230Vac
Additional input: rain detector
Compatible RF 868MHz RF Transmitter(NV.B.21.01.01, NV.B.22.01.01)
Other technical details, please refer to 250N chain actuator datasheet

250N RF Control 230Vac Chain Actuator

Power Input: 230Vac
Additional input: rain detector.
Compatible RF 868MHz RF Transmitter(NV.B.21.01.01, NV.B.22.01.01)
Other technical details, please refer to 250N chain actuator datasheet

Order Code: C02.R.A.300.S/C02.R.A.400.S
300mm/400mm Stroke, Force: 250N



Order Code: NV.B.21.00.01.S1

Single Channel hand held transmitter
RF 433 MHz
Battery: CR 2430 x 1

Order Code: NV.B.21.00.05

5-Channel hand held transmitter
RF 433MHz
Battery: CR 2430 x 1

Order Code: NV.B.22.01.01

Single Channel BS plate transmitter
RF 868 MHz
Dimension: 86mm * 86mm
Battery: CR 2430 x 1

Order Code: NV.B.21.01.01

Single Channel hand held transmitter
RF 868MHz
Battery :CR 2430 x 1

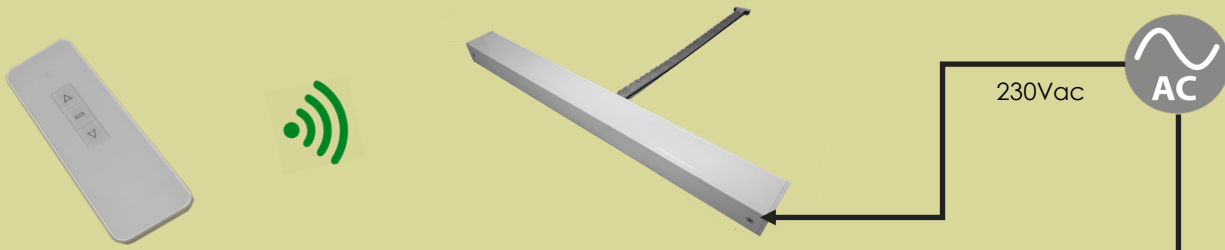


PRODUCT DATASHEET

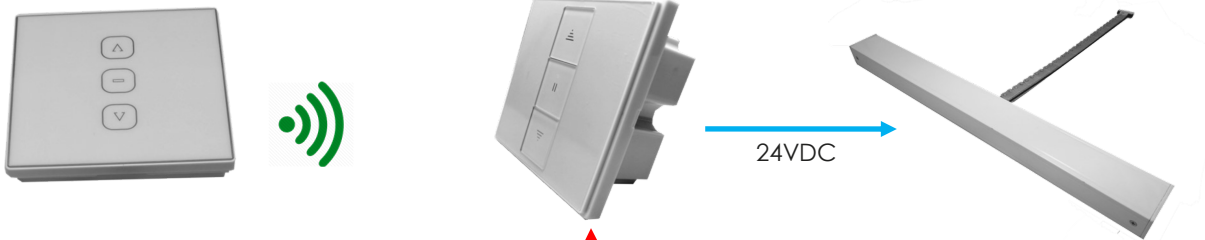
Configuration

230Vac Series

230Vac Chain Actuator with Built in RF controls
(CA4.R.A.xxx.S, CO2.R.A.xxx.S)



3A RF Power Supply Unit (NV.B.05.02.03)



20A Single Zone RF Slave Power Unit
(SV.R.20.01.01)

